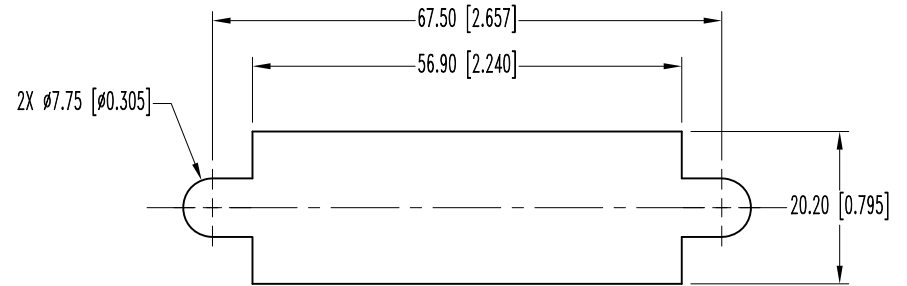
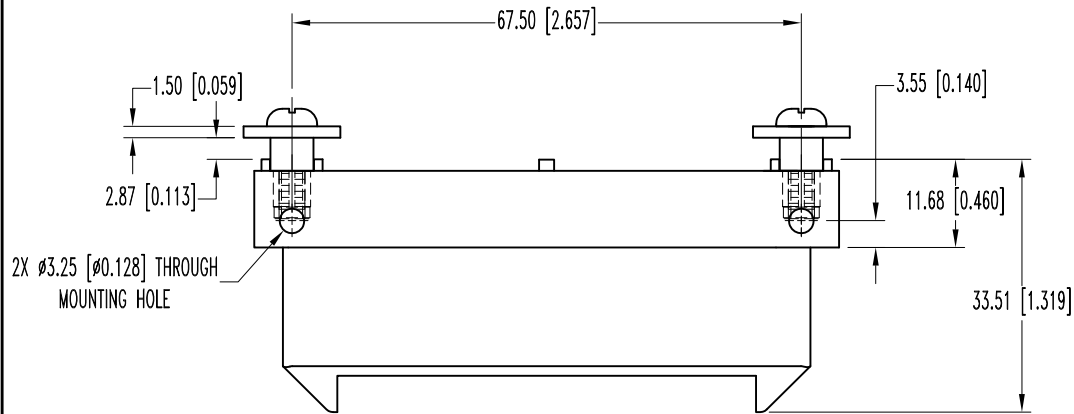


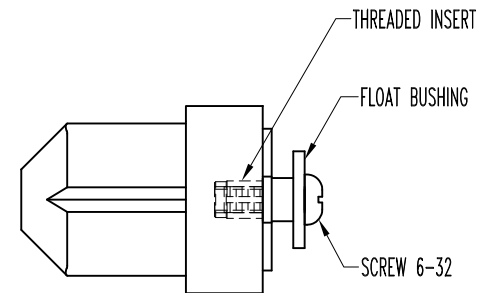
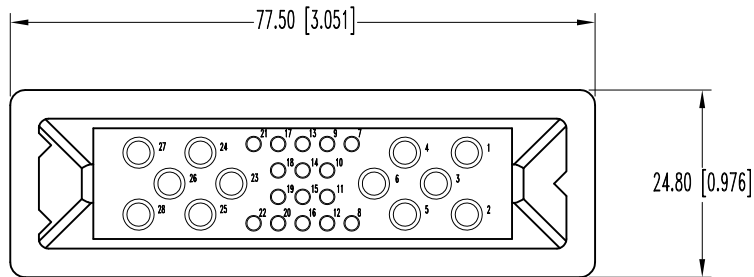
SK10008

THIS DRAWING CONTAINS INFORMATION PROPRIETARY TO POSITRONIC AND ITS SUBSIDIARIES. POSITRONIC BELIEVES THE DATA ON THIS DRAWING TO BE RELIABLE, SINCE THE TECHNICAL INFORMATION IS GIVEN FREE OF CHARGE, THE USER EMPLOYS SUCH INFORMATION AT HIS OWN DISCRETION AND RISK. POSITRONIC ASSUMES NO RESPONSIBILITY FOR RESULTS OBTAINED OR DAMAGES INCURRED FROM USE OF SUCH INFORMATION IN WHOLE OR IN PART.

DATE	REV	REVISION RECORD	APP	DR	CK
11-20-08	NC	ECO 30295	COLE	YK	TK
2-14-11	A	ECO 33661	COLE	BS	COLE



PANEL CUTOUT



NOTES:

- MATERIALS AND FINISHES:
 INSULATOR: GLASS FILLED POLYESTER, UL 94V-0, COLOR: BLUE.
 FLOAT BUSHINGS: STEEL, ZINC PLATE WITH CHROMATE SEAL.
 SCREWS: STEEL, ZINC PLATE WITH CHROMATE SEAL.
- DETAILED PRODUCT, MECHANICAL, AND ELECTRICAL INFORMATION IS AVAILABLE IN THE LATEST INFINITY PRODUCT PUBLICATION. VISIT CONNECTPOSITRONIC.COM/PRODUCTS/64/INFINITY OR CONNECTPOSITRONIC.COM.
- CONNECTORS ROHS COMPLIANT PER ROHS DIRECTIVE 2002/95/EC OF 27 JAN 2003.
- DIMENSIONS ARE IN MILLIMETERS [INCHES].

	POSITRONIC INDUSTRIES INC. www.connectpositronic.com		FSCM 28198
	DECIMAL TOL. ± 0.38 [0.015]	MIP SERIES	SCALE N.T.S.
	TITLE MIP28W12F00830/AA		
ANGULAR TOL. ± 5°	DATE 11-20-08	DRAWING NUMBER SK10008	REV. A